

AGENDA MANAGEMENT SHEET

Name of Committee Nuneaton And Bedworth Area Committee

Date of Committee 28th September 2005

Report Title **Crime Statistics and Crime Hot Spots in Nuneaton and Bedworth**

Summary To provide the committee with an overview of crime statistics in Nuneaton and Bedworth and provide performance information for 2004/5.

For further information please contact: Kathy Robinson
Area Community Safety
Manager (North)
Tel: 02476 328174
kathyrobinson@warwickshire.gov.uk

Would the recommended decision be contrary to the Budget and Policy Framework?
No.

Background papers Nuneaton and Bedworth Crime and Disorder and Drugs Misuse Strategy 2005-8.

CONSULTATION ALREADY UNDERTAKEN:- Details to be specified

- Other Committees
- Local Member(s) Cllr Longden (Chair of Area Committee)
Cllr Hicks (as Chair of Nuneaton and Bedworth Crime and Disorder Reduction Partnership)
- Other Elected Members
- Cabinet Member
- Chief Executive
- Legal Jane Pollard Assistant County Solicitor
- Finance
- Other Chief Officers Martyn Davey, Director of CAMS; John Deegan, Director of PTES,
- District Councils
- Health Authority

Police

Chief Inspector Neil Hewison - District
Commander

Other Bodies/Individuals

.....

FINAL DECISION YES

SUGGESTED NEXT STEPS:

Details to be specified

Further consideration by
this Committee

.....

To Council

.....

To Cabinet

.....

To an O & S Committee

.....

To an Area Committee

.....

Further Consultation

.....

**Nuneaton And Bedworth Area Committee - 28th
September 2005.**

**Crime statistics and Crime Hot Spots in Nuneaton and
Bedworth**

**Report of the County Solicitor and Assistant Chief
Executive**

Recommendation

The committee notes the report and make any comments back to the Community Safety Overview and Scrutiny Committee.

1.0 Introduction

- 1.1 At the Community Safety Overview and Scrutiny Committee on 7 June following discussion of a report by the Police on Crime figures for the County, Cllr Hobbs, Portfolio Holder for Community Safety, suggested that Area Committees might wish to look at the crime figures and crime "hotspots".
- 1.2 This report provides an overview of recorded crime and disorder statistics in Nuneaton & Bedworth Borough. It details performance during 2004/05 and provides a comparison with previous years. The source of the all the raw data is Warwickshire Police. The analysis has been carried out by the Research Unit at Warwickshire County Council.
- 1.3 Due to recent changes (which took effect from July 1st 2005) to the way that the police now record incidents there is no recent data for anti-social behaviour incidents. I have however included information from 2004/5.

2.0 Headline Figures

- 2.1 Total recorded crime rates in Nuneaton and Bedworth for 2004/5 were above both the regional and national rates. Rates of domestic burglary and vehicle crime in Nuneaton & Bedworth were above both regional and national averages in 2004/05. Violent crime is below the regional and national levels.

TABLE 1
Nuneaton & Bedworth in a national context, 2004/05

District/Borough	Domestic Burglary per 1000 Households	Vehicle Crime per 1000 Population	Violent Crime per 1000 Population	Total Recorded Crime per 1000 Population
North Warwickshire	11.3	14.3	10.5	73.7
Nuneaton & Bedworth	17.1	16.7	19.1	106.2
Rugby	16.5	14.7	15.2	93.3
Stratford-on-Avon	6.4	9.5	9.0	61.9
Warwick	10.7	10.2	14.6	78.0
Warwickshire	12.2	12.8	14.0	83.1
West Midlands Region	14.3	13.0	23.0	100.0
England & Wales	14.4	14.0	22.0	103.0

- 2.2 Crime in Nuneaton and Bedworth accounts for roughly a third of all recorded crime across the force area.
- 2.3 During 2004/05, total recorded crime in Nuneaton & Bedworth was unchanged on the previous year.
- 2.4 There were significant reductions in domestic burglary, violent crime, drug offences, shoplifting and commercial burglary.
- 2.5 The main increase in Nuneaton & Bedworth has been criminal damage offences. This will include the spate of tyre slashings that have taken place across the Borough this year.

TABLE 2
Recorded Crime & Disorder Totals 2004/2005 compared with 2003/2004

	North Warks	Nun & Bedworth	Rugby	Stratford-on-Avon	Warwick	County
Domestic Burglary	- 27%	- 17%	- 1%	- 16%	- 22%	- 16%
Violent Crime	- 23%	- 6%	+ 6%	- 12%	+ 1%	- 5%
<i>Violence against the person</i>	- 25%	- 6%	+ 4%	- 11%	+ 2%	- 5%
<i>Robbery</i>	- 16%	- 29%	- 8%	- 38%	- 26%	- 23%
<i>Sexual offences</i>	- 2%	+ 33%	+ 69%	- 16%	+ 34%	+ 25%
Vehicle Crime	- 25%	- 2%	- 11%	+ 1%	- 9%	- 8%
<i>Theft of vehicle</i>	- 25%	- 10%	- 7%	+ 8%	- 9%	- 10%
<i>Theft from vehicle</i>	- 25%	+ 3%	- 12%	- 1%	- 9%	- 8%
Criminal Damage	- 13%	+ 15%	- 12%	+ 8%	+ 15%	+ 4%
<i>Arson</i>	- 36%	- 1%	- 33%	+ 17%	- 12%	- 15%
Drug Offences	+ 63%	- 28%	+ 33%	- 24%	- 15%	- 3%

Shoplifting	- 26%	- 21%	+ 7%	- 17%	- 23%	- 17%
Commercial Burglary	- 20%	+ 1%	- 37%	- 2%	+ 6%	- 10%
Community Disorder Incidents*	- 1%	+ 51%	+ 7%	+ 40%	+ 8%	+ 22%
<i>Nuisance Youth Incidents*</i>	+ 15%	+ 43%	+ 45%	+ 39%	+ 34%	+ 38%
All Crime	- 18%	0%	- 8%	- 5%	- 4%	- 6%

* incident data, not included in the total recorded crime figures

Figures in italics are subsets of main category

'All Crime' figure does not equal sum of listed categories

TABLE 3
Recorded Crime & Disorder Totals 2004/2005 (selected types)

	North Warks	Nun & Bedworth	Rugby	Stratford-on-Avon	Warwick	County
Domestic Burglary	295	839	612	314	608	2,668
Violent Crime	650	2,298	1,356	1,041	1,934	7,297
<i>Violence against the person</i>	<i>575</i>	<i>2,060</i>	<i>1,156</i>	<i>954</i>	<i>1,746</i>	<i>6,491</i>
<i>Robbery</i>	<i>32</i>	<i>105</i>	<i>107</i>	<i>28</i>	<i>81</i>	<i>353</i>
<i>Sexual offences</i>	<i>43</i>	<i>133</i>	<i>93</i>	<i>59</i>	<i>107</i>	<i>435</i>
Vehicle Crime	884	2,004	1,309	1,096	1,350	6,643
<i>Theft of vehicle</i>	<i>280</i>	<i>747</i>	<i>395</i>	<i>263</i>	<i>233</i>	<i>1,918</i>
<i>Theft from vehicle</i>	<i>604</i>	<i>1,257</i>	<i>914</i>	<i>833</i>	<i>1,117</i>	<i>4,725</i>
Criminal Damage	890	3,116	1,950	1,429	2,343	9,728
<i>Arson</i>	<i>47</i>	<i>140</i>	<i>87</i>	<i>55</i>	<i>73</i>	<i>402</i>
Drug Offences	155	150	252	221	136	914
Shoplifting	135	590	414	275	504	1,918
Commercial Burglary	216	430	299	421	497	1,863
Community Disorder Incidents*	3,275	10,360	6,258	4,989	8,338	33,305
<i>Nuisance Youth Incidents*</i>	<i>1,347</i>	<i>4,090</i>	<i>2,657</i>	<i>1,873</i>	<i>2,959</i>	<i>12,936</i>
All Crime	4,555	12,780	8,325	7,127	10,344	43,131

TABLE 4
Recorded Crime & Disorder Rates 2004/2005 (selected types)

	North Warks	Nun & Bedworth	Rugby	Stratford-on-Avon	Warwick	County
Domestic Burglary	11.3	17.1	16.5	6.4	10.7	12.2
Violent Crime	10.5	19.1	15.2	9.0	14.6	14.0
<i>Violence against the person</i>	<i>9.3</i>	<i>17.1</i>	<i>13.0</i>	<i>8.3</i>	<i>13.2</i>	<i>12.5</i>
<i>Robbery</i>	<i>0.5</i>	<i>0.9</i>	<i>1.2</i>	<i>0.2</i>	<i>0.6</i>	<i>0.7</i>
<i>Sexual offences</i>	<i>0.7</i>	<i>1.1</i>	<i>1.0</i>	<i>0.5</i>	<i>0.8</i>	<i>0.8</i>
Vehicle Crime	14.3	16.7	14.7	9.5	10.2	12.8
<i>Theft of vehicle</i>	<i>4.5</i>	<i>6.3</i>	<i>4.5</i>	<i>2.3</i>	<i>1.8</i>	<i>3.7</i>
<i>Theft from vehicle</i>	<i>9.8</i>	<i>10.4</i>	<i>10.2</i>	<i>7.2</i>	<i>8.4</i>	<i>9.1</i>

Criminal Damage	14.4	25.9	21.9	12.4	17.7	18.7
<i>Arson</i>	<i>0.8</i>	<i>1.2</i>	<i>1.0</i>	<i>0.5</i>	<i>0.6</i>	<i>0.8</i>
Drug Offences	2.5	1.2	2.8	1.9	1.0	1.8
Shoplifting	2.2	4.9	4.6	2.4	3.8	3.7
Commercial Burglary	3.5	3.6	3.4	3.7	3.7	3.6
Community Disorder Incidents*	53.0	86.1	70.2	43.3	62.8	64.1
<i>Nuisance Youth Incidents*</i>	<i>21.8</i>	<i>34.0</i>	<i>29.8</i>	<i>16.3</i>	<i>22.3</i>	<i>24.9</i>
All Crime	73.7	106.2	93.3	61.9	78.0	83.1

* incident data, not included in the total recorded crime figures

Figures in italics are subsets of main category. All Crime figure does not equal sum of listed types. Rates are per 1000 population except domestic burglary (per 1000 households)

- 2.5 During the first quarter of 2005/06 (April to June), there have been encouraging reductions in crime compared to the same period last year. For example, domestic burglary is down 26%, violent crime is down 7% and vehicle crime is down 37%. Criminal damage has increased by 29%, largely due to the continued tyre slashings. Overall, total recorded crime is down 3% on the same period in 2004.

3.0 Performance against Nuneaton & Bedworth CDRP Targets

- 3.1 The previous Crime and Disorder Reduction Strategy (2002 - 2005) contained a number of specific targets, some of which are listed below. The violent crime target was made redundant by significant changes to the way violent crime is recorded.

TABLE 6

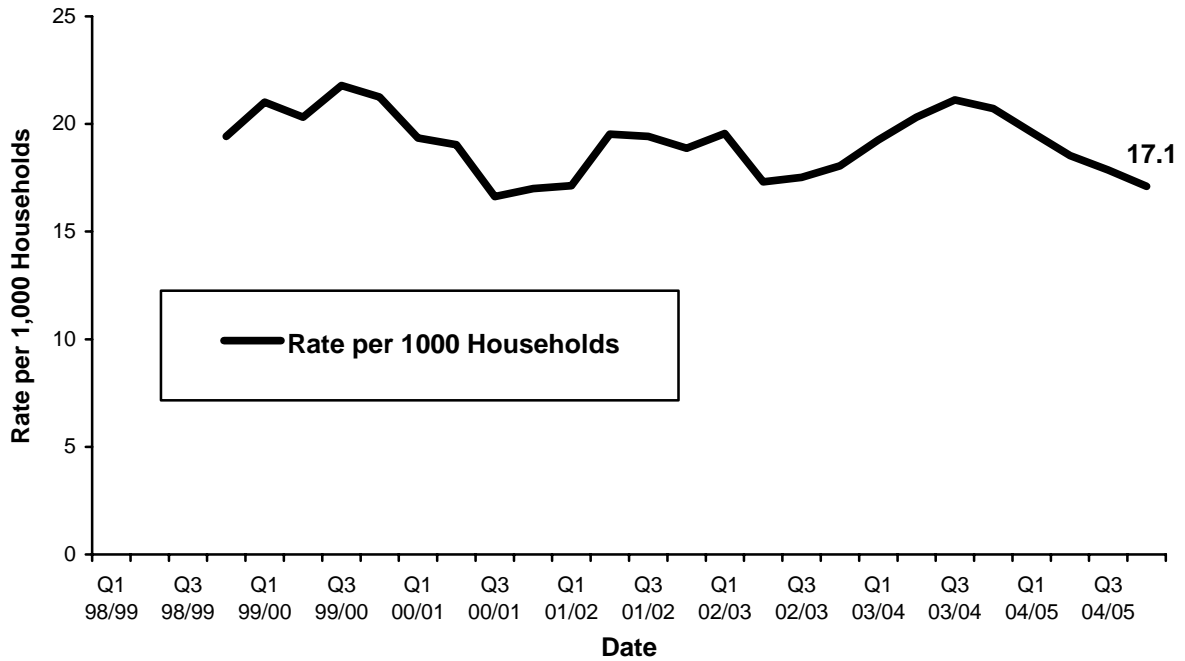
Crime/ Incident Type	Target	First Strategy				Second Strategy		
		1998/99	1999/00	2000/01	2001/02	2002/03	2003/04	2004/05
		Number (rate)	Number (rate)	Number (rate)	Number (rate)	Number (rate)	Number (rate)	Number (rate)
Domestic Burglary	16.8 per 1000 households by 2004/05	19.4 (932)	21.3 (1020)	17.0 (816)	18.9 (906)	18.1 (867)	20.7 (1015)	17.1 (839)
Violent Crime	10.4 per 1000 population by 2002/03	6.1 (717)	6.7 (794)	6.9 (811)	11.4 (1343)	15.8 (1885)	20.4 (2447)	19.1 (2298)
Vehicle Crime	15.08 per 1000 population by 2004/05	20.1 (2377)	17.4 (2058)	16.3 (1932)	14.9 (1757)	15.1 (1804)	17.1 (2044)	16.7 (2004)
Nuisance Youths	Reduce by 6% by 2004/05	21.2 (2516)	23.4 (2778)	20.3 (2399)	25.2 (2983)	21.6 (2582)	23.8 (2852)	34.0 (4090)

Targets as published in Crime & Disorder Reduction Strategy 2002 – 2005

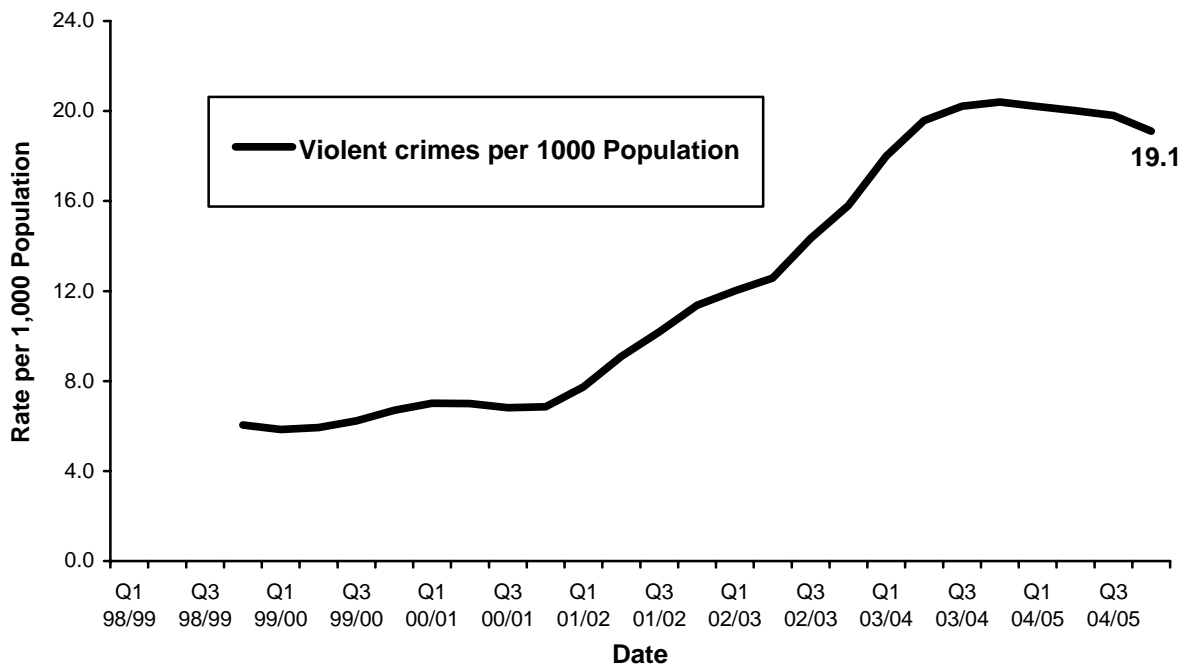
Violent crime figures prior to Apr-01 are not comparable due to changes in recording practices

3.2 Trends

Domestic Burglaries by Quarter, Nuneaton & Bedworth Borough

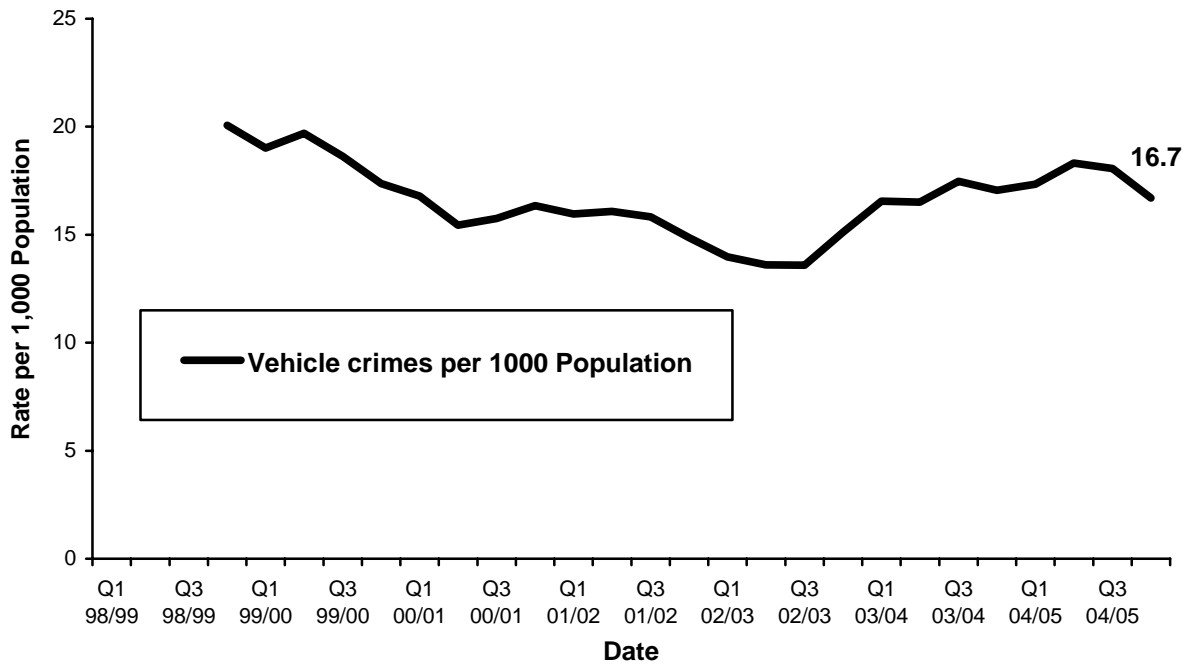


Violent Crimes by Quarter, Nuneaton & Bedworth Borough



Note: Violent crime figures prior to Apr-01 are not comparable due to changes in recording practices

Vehicle Crimes by Quarter, Nuneaton & Bedworth Borough



4.0 Beat-level Statistics

4.1 The graph below demonstrates the change in total recorded crime in each Police beat area during 2004/05, compared with 2003/04.

Total recorded crime (compared with 2003/2004)

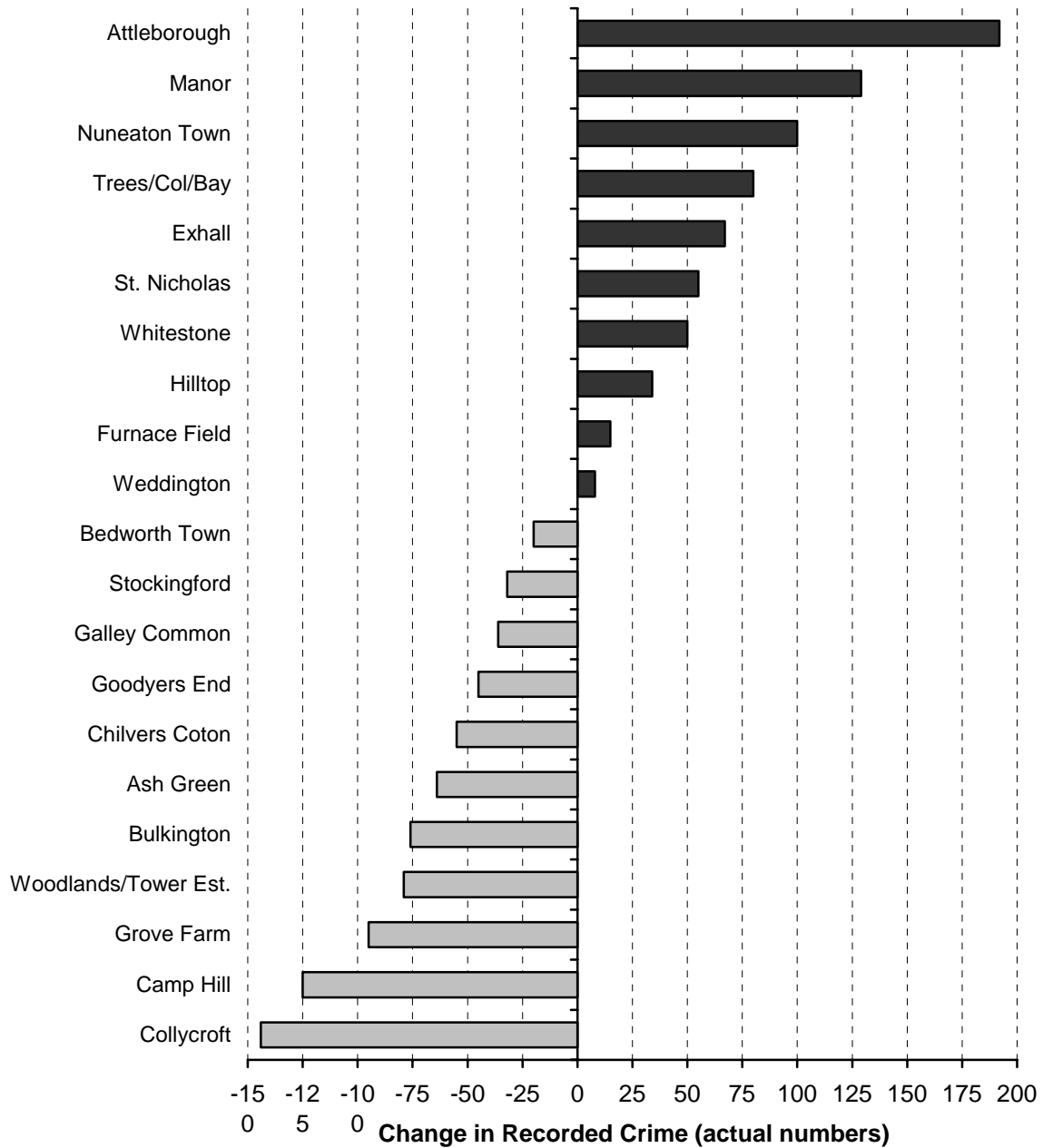


TABLE 7

The table below illustrates the change in each Police Beat for the key volume crime types.

Total recorded volume crime (compared with 2003/2004)

Beat Name	Total Recorded Crime	Change on last year	Domestic Burglary	Change on last year	Violent Crime	Change on last year	Vehicle Crime	Change on last year
Weddington	378	8	37	8	61	7	46	-11
St. Nicholas	447	55	29	2	41	-11	113	26
Whitestone	412	50	38	12	46	-7	79	14
Attleborough	748	192	48	12	103	-14	144	53
Hilltop	684	34	67	-3	126	-5	117	13
Nuneaton Town	1614	100	16	8	378	-12	81	22
Camp Hill	758	-125	81	-39	154	-17	155	0
Stockingford	642	-32	48	-39	123	3	105	-26
Grove Farm	735	-95	49	-14	127	-19	130	-20
Galley Common	539	-36	33	-19	86	-1	95	-37
Manor	1400	129	108	-33	222	5	229	-6
Chilvers Coton	526	-55	30	-39	96	-3	94	10
Collycroft	342	-144	18	-22	65	-16	52	-67
Furnace Field	588	15	43	16	143	-12	102	10
Bedworth Town	534	-20	12	0	114	0	41	-5
Goodyers End	625	-45	37	-1	130	-1	96	-3
Exhall	315	67	39	15	54	7	48	12
Woodlands	254	-79	27	1	40	-25	49	8
Ash Green	444	-64	36	-36	67	-23	87	-4
Trees/Col/Bay	473	80	27	7	73	7	85	-7
Bulkington	322	-76	16	-12	49	-12	56	-22
Borough Total	12,780	-41	839	-176	2,298	-149	2,004	-40

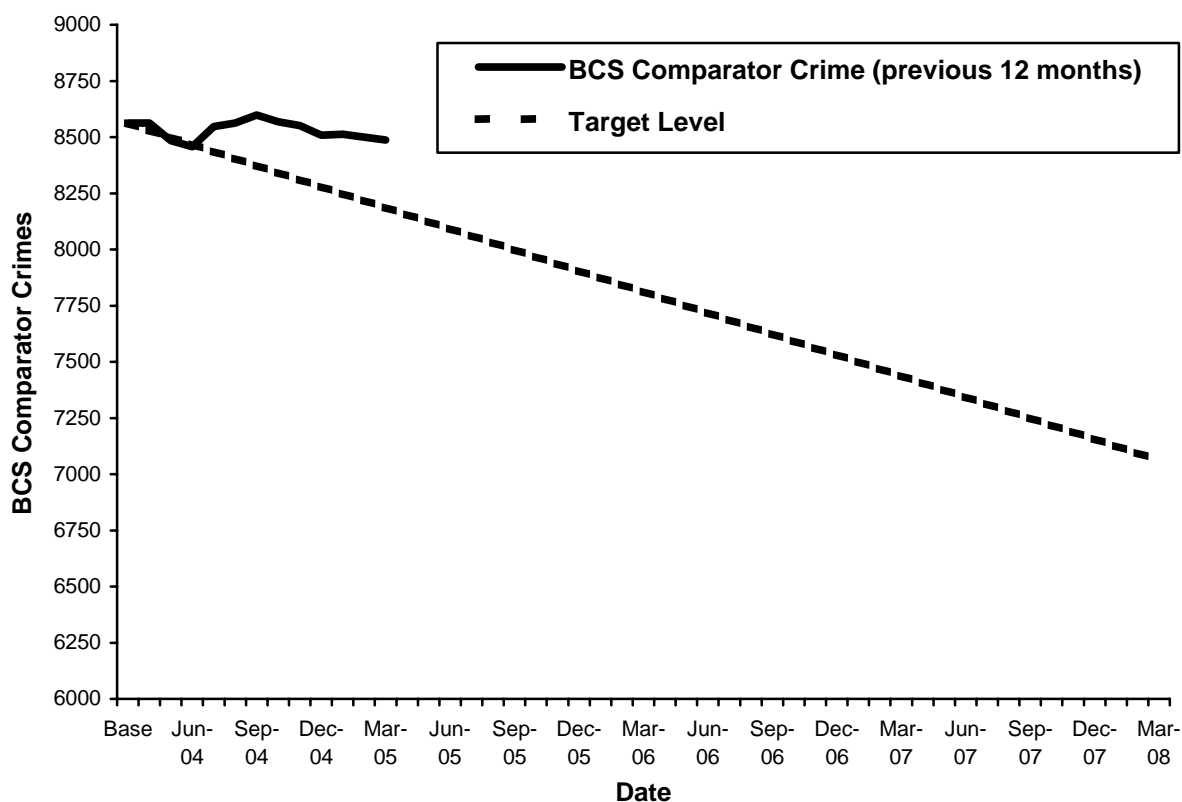
6.0 British Crime Survey Comparator Crime

6.1 Government Office for the West Midlands has asked Nuneaton & Bedworth CDRP to achieve an overall reduction of 17.5% by 2007/08 in the crime types listed below, based on 2003/04. This table illustrates performance during the first year of this period.

TABLE 8

Crime Type	2003/2004 Baseline	2007/2008 Reduction Target	2004/2005 Actual	Change on 2003/2004
Theft or unauthorised taking of vehicle	826	681	747	- 10%
Theft from a vehicle	1,218	1,005	1,257	+ 3%
Vehicle interference	261	215	303	+ 16%
Domestic burglary	1015	812	839	- 17%
Theft or unauthorised taking of a cycle	342	282	273	- 20%
Theft from person	92	76	126	+ 37%
Criminal damage	2,705	2,252	3,116	+ 15%
Common assault	627	517	488	- 22%
Woundings (serious and other)	1,357	1,120	1,233	-9%
Robbery	119	98	105	- 12%
Total BCS Comparator Crime	8,562	7,064 17.5%*	8,487	- 1%

* Although the overall BCS reduction target agreed with GOWM is 17.5%, the targets for the individual crime types combine to make a reduction target of 17.56%.



7.0 Anti-Social Behaviour incidents

- 7.1 The most significant concern for communities is “anti-social behaviour”. The following information gives an indication of the level of this behaviour and numbers of incidents involved. The chart illustrates that there has been a 7% increase overall in the incident types detailed below, the most significant of which is a 43% increase in nuisance youth incidents reported to the police during 2004/5 compared with 2003/4.

Anti-Social Behaviour Incidents - Nuneaton & Bedworth

Incident Type	2003/04	2004/05	Change
Abandoned vehicles	914	773	-15%
Animal-related problems	324	312	-4%
Criminal damage, vandalism	2927	3222	10%
Drug/substance misuse/drug dealing	665	509	-23%
Hoax calls	1781	1647	-8%
Intimidation/Harassment	635	741	17%
Noise	215	242	13%
Nuisance behaviour	4682	5558	19%
Prostitution, sexual acts	139	111	-20%
Total	12,282	13,115	7%
Rate per 1,000 Population	103	109	
Nuisance youths	2852	4090	43%

- 7.2 In order to comply with the National Standard for incident recording (NSIR) there have been changes to the way that Warwickshire Police code and therefore record incidents. The main impact of these changes means that from 1st July 2005 there is no comparable information for anti-social behaviour incidents. This will not result in any major increases to the numbers of incidents however, they are now categorised differently and for example we will no longer be able to specifically see the breakdown for nuisance youth incidents. Officers from the Police and our Research Team are currently working out how we can overcome this problem and ensure that we have some meaningful data to monitor and compare anti-social behaviour incidents.

DAVID CARTER
County Solicitor & Assistant
Chief Executive
Shire Hall
Warwick

02 September 2005